
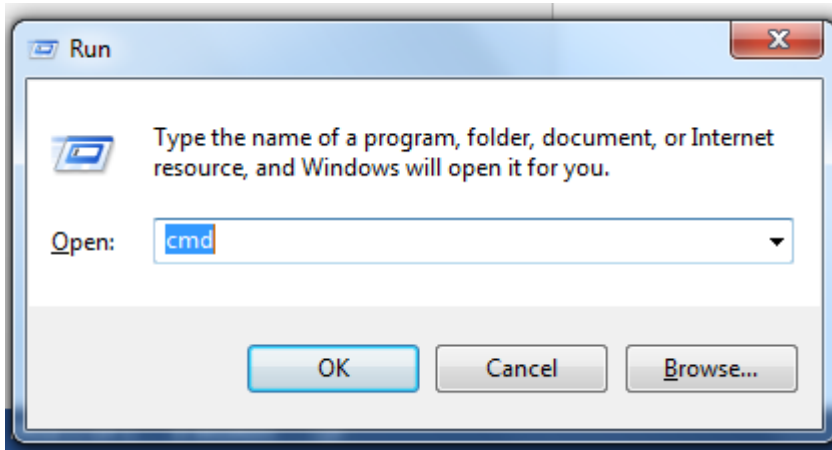
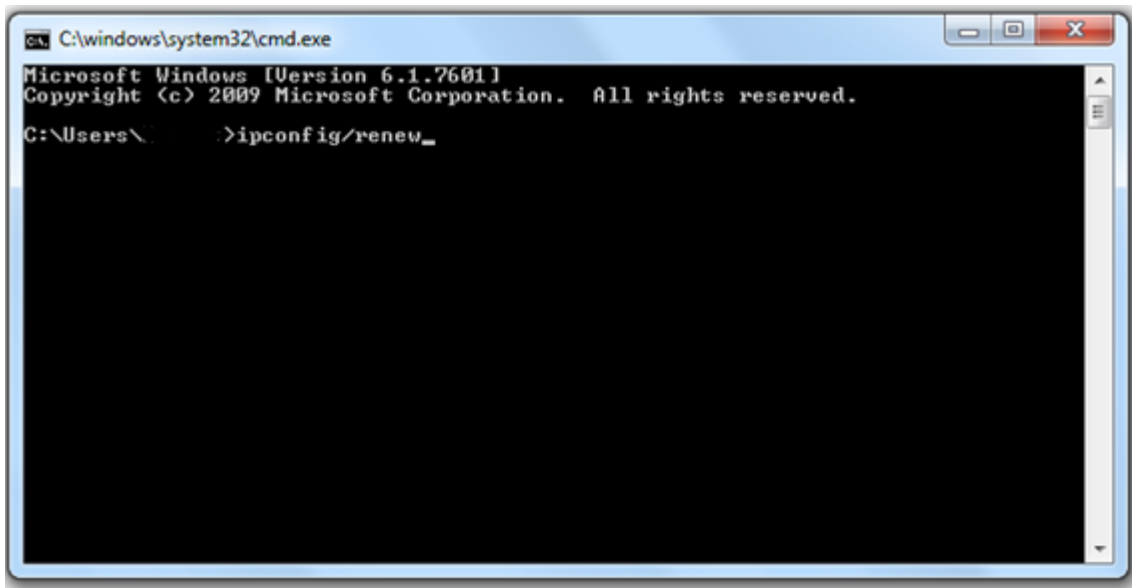


1. On your computer, click on the **Start button**  then go to **run** (or press the

windows key  at the bottom left of the keyboard and press **R**). Type the word **cmd** and push enter. (on windows 98/95 machines type **command** instead of cmd.) A black window will appear.



2. In the black window type: **ipconfig /renew** and then push enter

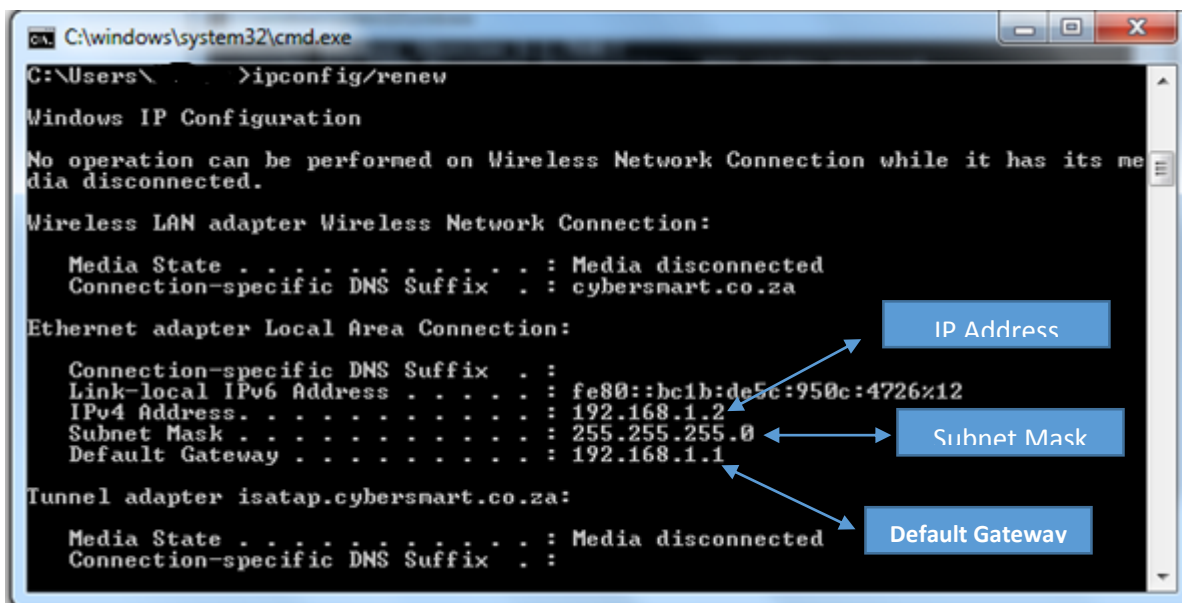


3. It will display (within 5 seconds) something like

ip address 10.0.0.100

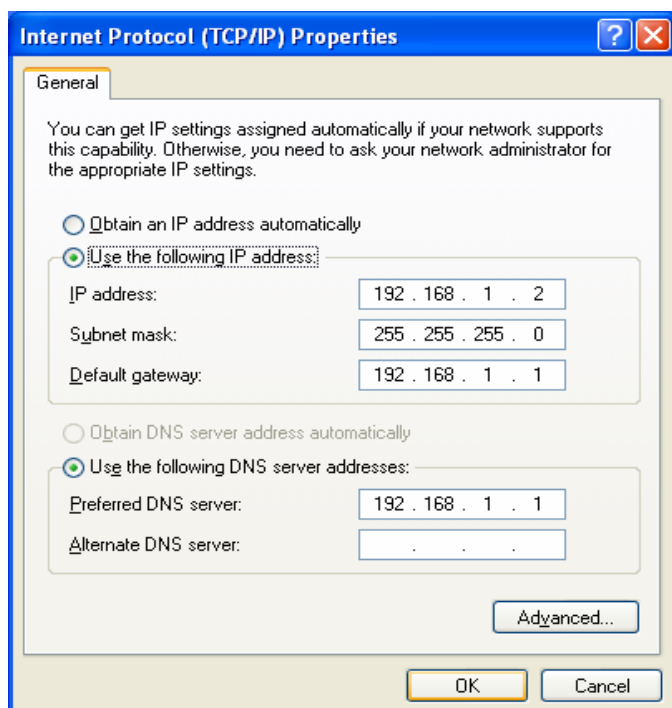
subnet mask 255.255.255.0

default gateway 10.0.0.2



(Note your ip address/gateway may start with 192.168.x.x - as long as the gateway address appears and is not 0.0.0.0 you are on the right track.) **Please write the gateway address on a piece of paper for use in the next step. If gateway does not appear then:**

- Go to **Start button** then **control panel** then **Network and Internet Connections** then **Network Connections** then **LAN or High Speed Internet** then **Properties** then **Internet Protocol (TCP/IP)** and make sure everything is on obtain automatically



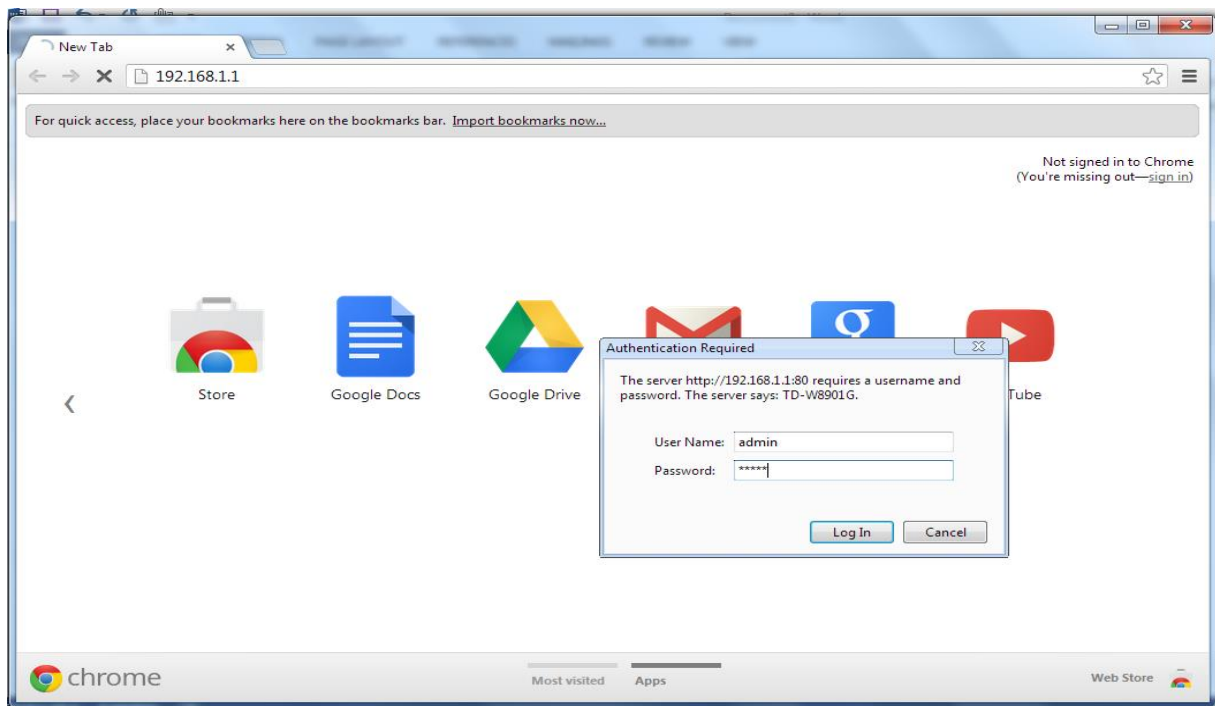
- switch off **windows firewall/norton security/zone alarm** or any other security reature and then type **ipconfig /renew** again; *OR*
- switch **off** internet connection sharing if you were using this machine to allow others to

connect to the internet; *OR*

• You have a proxy switched on - go to Internet explorer, tools then options, then connections tab at the top, then click LAN and make sure the proxy settings are not ticked.

1. Open your web browser (Internet Explorer, the blue "e", **Firefox**, **Safari**, **Chrome**) and where you would normally put http:// address put the gateway address you wrote on the piece of paper in step 3. In this example it would be 10.0.0.2, however please use whatever your machine said was the gateway address!
2. You will be prompted for a username and password, which depending on your router could be one of the following pairs:

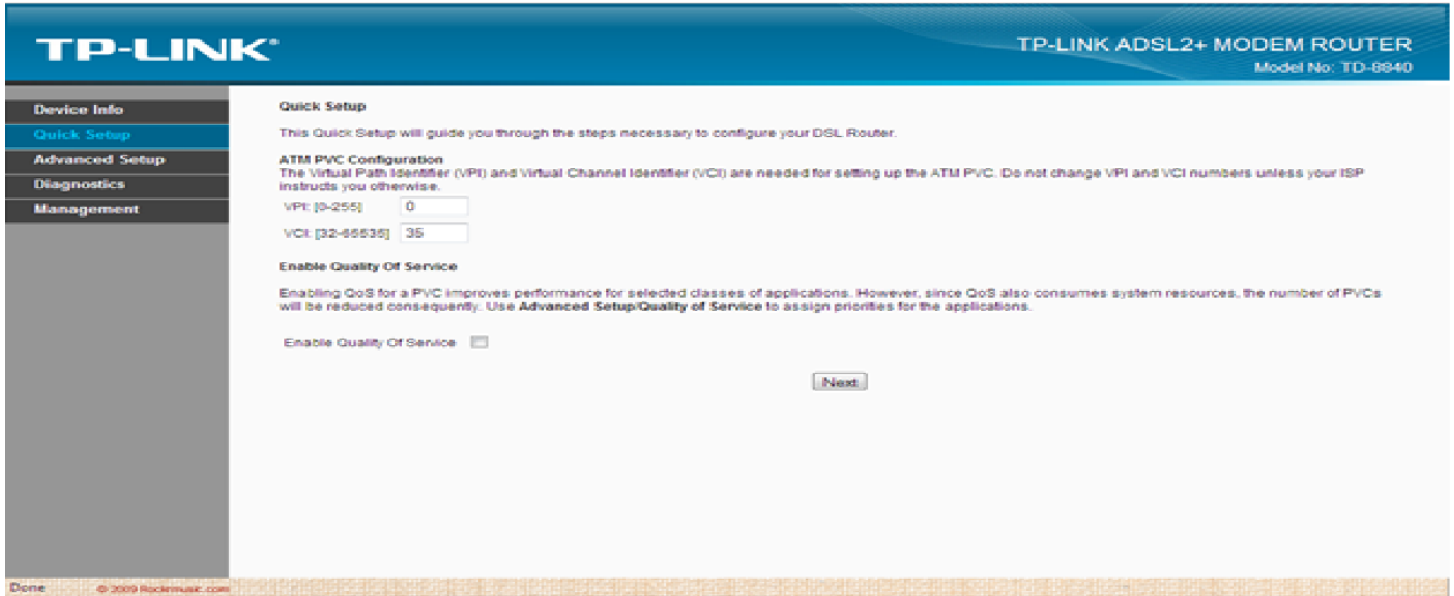
Username	Password
admin	admin
admin	administrator
admin	password
admin	epicrouter
root	root
admin	conexant
adsl	086100fast
admin	smcadmin
admin	trendchip



If at any time it says "object not found" or "page cannot be displayed" then push the refresh button in your browser. If none of the passwords work, then please look in your manual for the appropriate password

If one of the above passwords is successful a webpage will be displayed.

1. Look for one of the following menus. "quick setup", "basic setup", "wizard setup", "quick start" or "WAN". If one of these menus exist click on it. If these menus do not exist, then look for a menu called configuration click on it , then click on WAN , it may then have a line saying **pvc0** with a submit button – push this and all the configuration parameters will display.

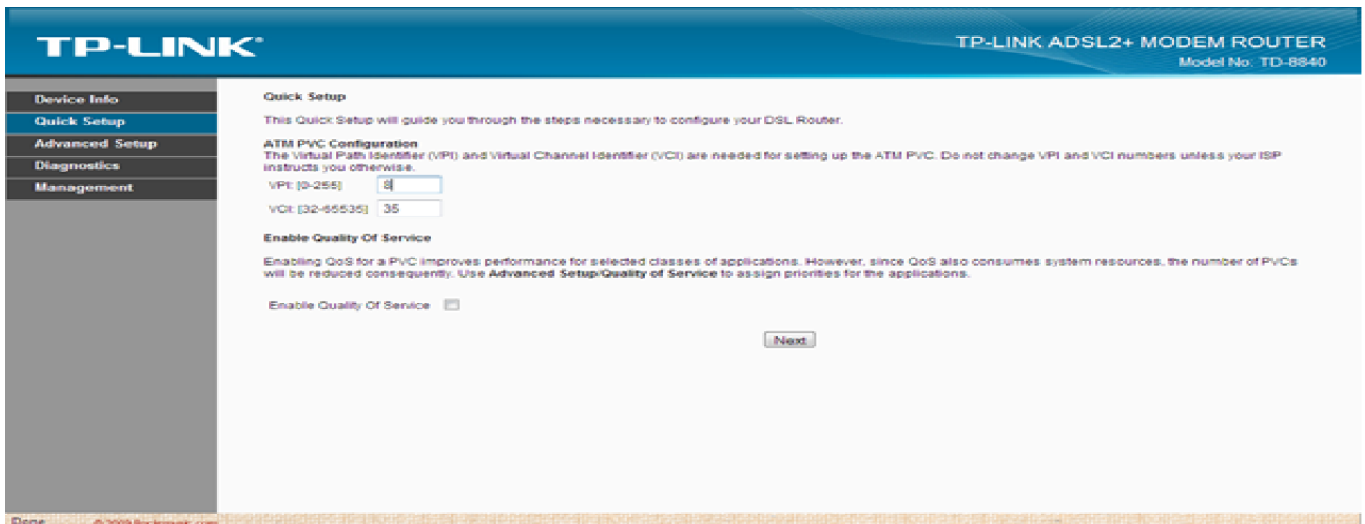


There are 5 settings that you need to change in order for this to work.

- I. Bridge must be disabled or routing must be enabled
- II. Encapsulation must be pppoe LLC. (if it only has PPPoE as an option look for a line that says multiplexing and change that to LLC)

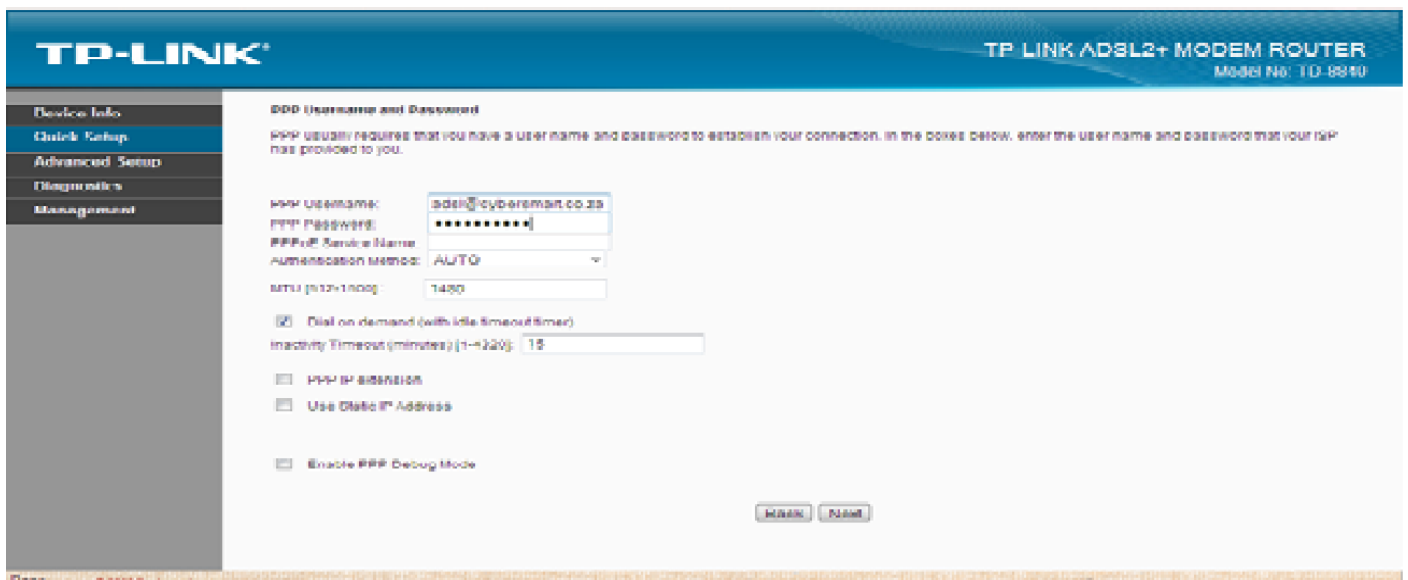


- III. VPI=8, VCI=35 (if these are wrong your ADSL Ink light will not go solid see 2 above)



IV. NAT must be enabled

- V. Enter the username and password that you got from our website. The username is the email address that you choose and the password is the one that was sent to your cellphone. If you don't have a username and password yet, you can use **adsl@cybersmart.co.za** as the username and **086100fast** as the password. This username will allow you to connect to <http://www.cybersmart.co.za> only so that you can signup online for your own username and password. You signup online by going to <http://www.cybersmart.co.za> and choosing option "Yes" under "Do you have an adsl circuit installed?".



After you have changed all the appropriate settings, push the submit/apply button followed by **"save configuration to flash or save and reboot"** (the order you do this in is important - you must **first** apply then save). The router will reboot and after about 30 seconds the adsl

link light will go **solid**. When this happens you will be able to browse. (If you have entered adsl@cybersmart.co.za, you will only be able to get to <http://www.cybersmart.co.za> where you need to signup online to get your own adsl username and password. Once you have this repeat from step 5.)